

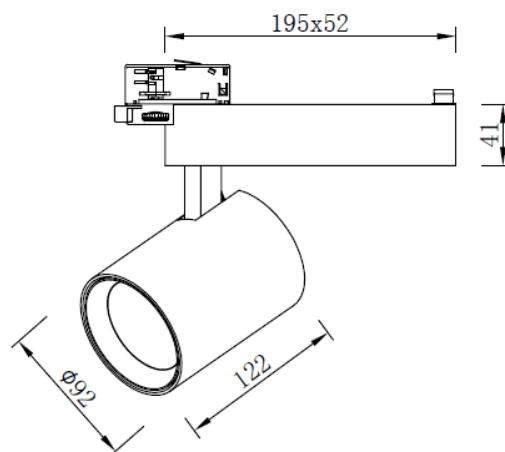
Installation Instructions

DESCRIPTION: Messina Midi



NOTICE

1. This fitting requires 100-240V AC/50HZ power input to the driver.
2. Do not interchange any parts of this fitting.
3. A minimum distance of 50mm is required around the fitting to allow for air ventilation.
4. Allow a minimum distance between fitting and illuminated subject of 200mm.
5. Do not touch fitting when in use.
6. Do not cover with any form of heat proof material.



INSTALLATION PROCESS

1. Ensure the mains power is turned off.
2. Check that adapter orientation is correct.
3. Press adapter against track.
4. Turn locking lever to lock adapter to track and lock the tail.
5. Power switch adjust to "OFF" position and then rotate to select circuit to "1→off→3→off→2" or "2←off←3←off←1".
6. Installation is complete.

